



# Jelgava – city for development

*Jelgava*

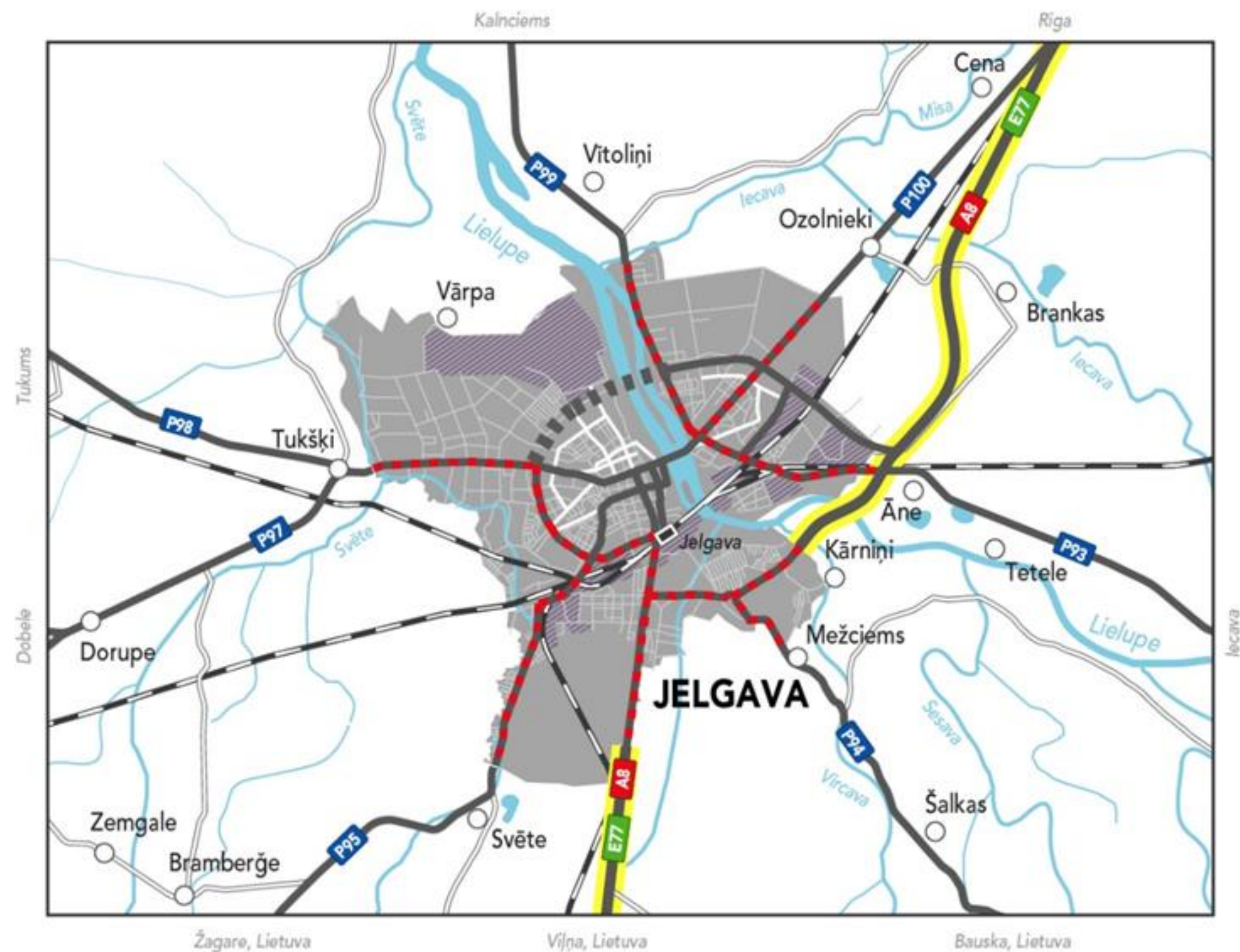
# Jelgava today

- Total area - **60,3 km<sup>2</sup>**
- Distance to capital Riga - **42 km**
- Population (2026) – **59 441** , including **37 932** of working age
- Number of employed Jelgava inhabitants (2024) – **33 050**, including employed in Riga – **11 627**
- Work places in Jelgava (2024) – **25 517**
- The average monthly gross salary in public sector (2025) – **1674 EUR** (in Latvia – **1826 EUR**, in Riga – **2050 EUR**)
- Average unemployment rate (2025) – **3,2%**



# Jelgava – logistics center

The advantageous geographical location – the intersection of transit roads and railways, the close distance to the capital Riga – has contributed to the development of Jelgava as an industrial city and one of the most important transit centers of the country



**Jelgava has the potential to develop into an efficient multimodal logistics center using various types of transport options**

# Territories for industrial development in Jelgava



Historically, industrial territories have developed along railway lines and main roads

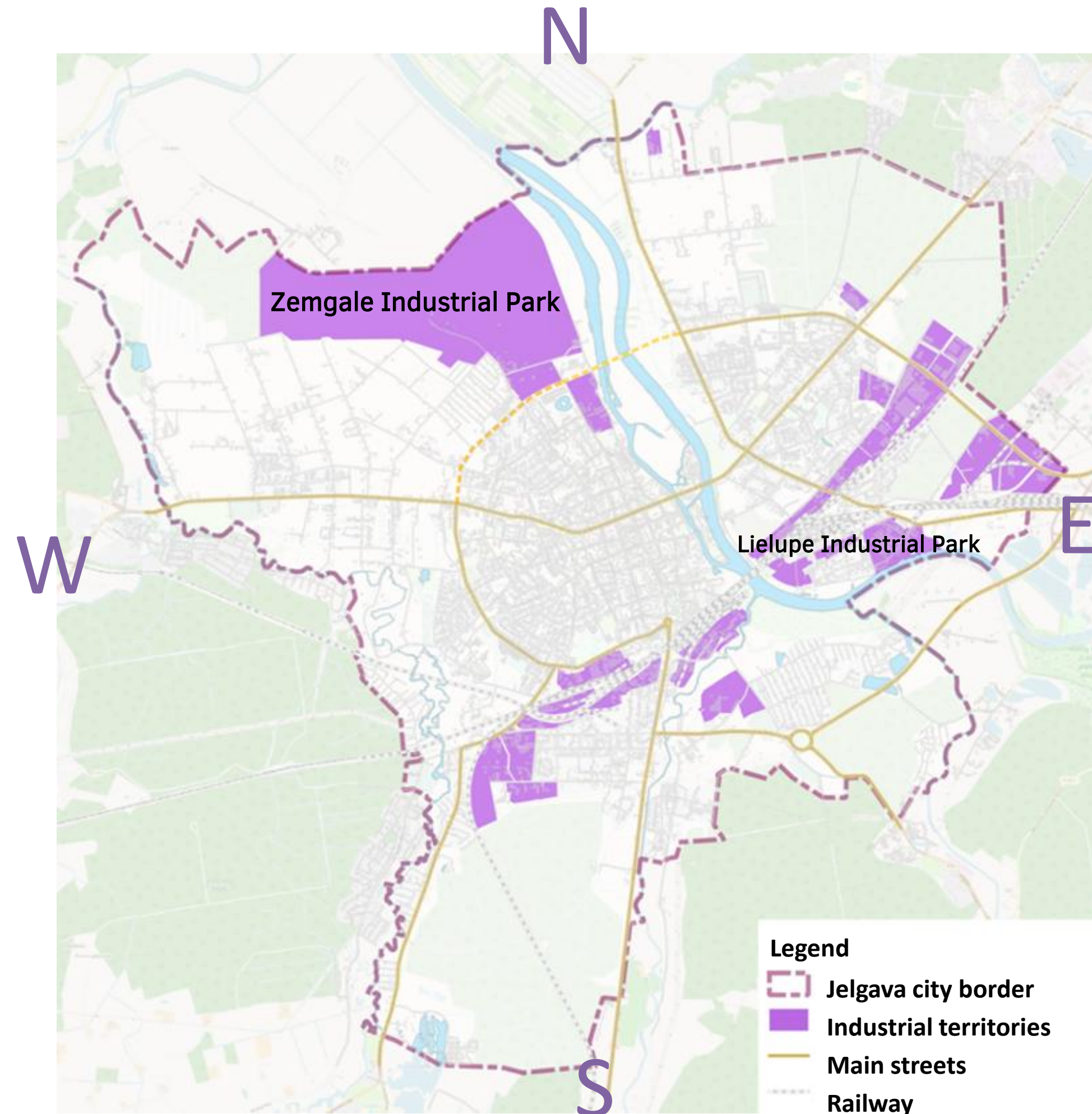


Developed food, woodworking, mechanical engineering and metalworking, plastic processing industries



**Main tasks for municipality:**

- development of road and engineering infrastructure
- ensuring accessibility of energy
- ensuring accessibility of different transport modes and their intermodality



# Development of Zemgale Industrial Park (ZIP)

The largest potential for the utilization of free (undeveloped) land in Jelgava is in the former airfield territory, covering an area of **350 hectares**, where the Zemgale Industrial Park is planned to be established.

The territory belongs to the municipality, available for local and international companies.

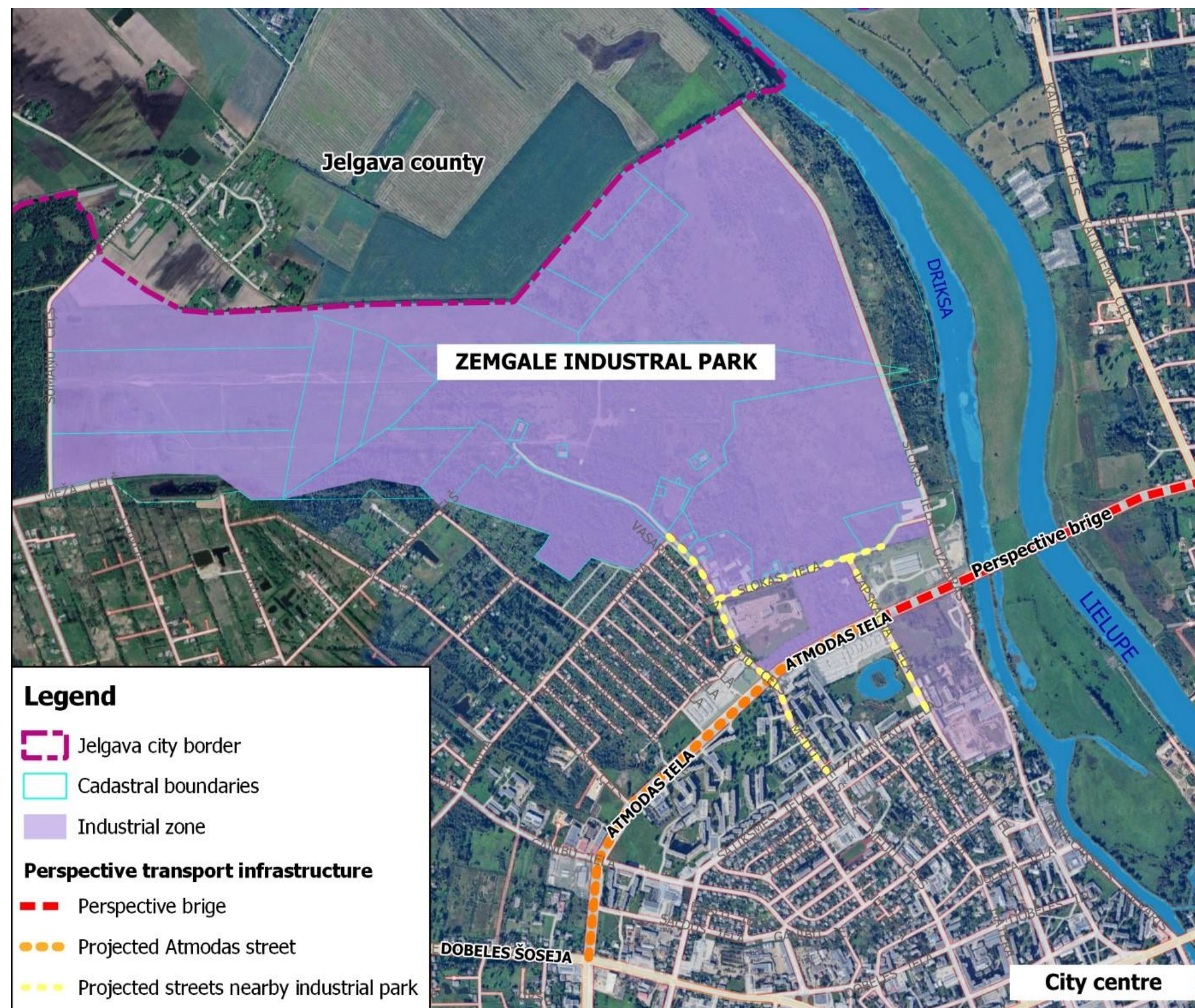
## Desired smart industries in ZIP

Bio-economy

Smart materials, technologies and engineering systems

Smart-energy

Information and communication technologies

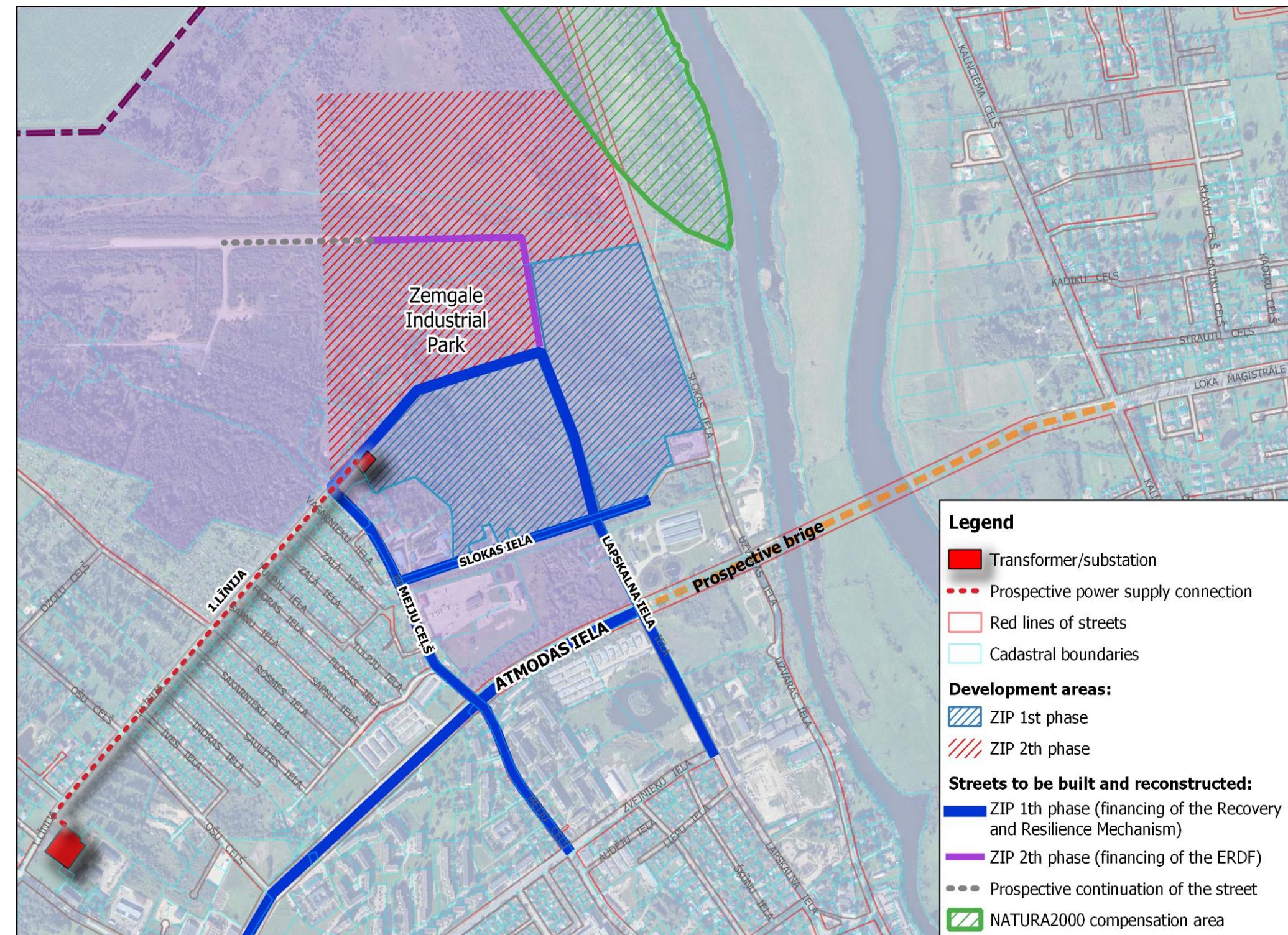


# Development of road and engineering infrastructure for ZIP (2024 – 2026)

## Development of ZIP till 2026 by municipality:

- ❑ Construction and reconstruction of street sections of Atmodas, Slokas, Lapskalna and Meiju streets (length of renovated streets - 5,7 km)
- ❑ Construction and reconstruction of engineering infrastructure – rain water drainage, water supply, electricity, electronic communication networks, lightning
- ❑ Total planned funding - **~26 mil. EUR**, including financing of The Recovery and Resilience Facility - 20 mil. EUR

**Planned availability of renewable energy  
(sun and wind) – 16 MW**



# Why in Jelgava?

## SMART CITY



### Skilled workforce, researches and innovations

- The city is home to Latvia University of Life Sciences and Technologies and its research institutions
- 2 professional educational institutions
- Municipality Adult Education Institution “Zemgale Region Competence Development Center”



### Business support

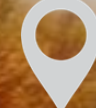
- Improvement of the transport and engineering infrastructure necessary for business development in industrial and degraded areas
- Business Incubator Services
- Consultative support




### Attractive urban environment

- Friendly environment for families with children - renovated schools, kindergartens, resting places
- Safety solutions (traffic organization, video surveillance, Municipal Operational Information Centre)
- New housing is being built
- The municipality continues to improve the city's public infrastructure by using the possibilities of EU funds

# Jelgava City Municipality

 Lielā street 11, Jelgava, LV-3001

 +371 63005522; +371 29196462

 [jelgava.lv](http://jelgava.lv)

 [invest@jelgava.lv](mailto:invest@jelgava.lv)



*Facebook*  
@Jelgavas pilsēta



*Instagram*  
@jelgavas\_pilseta



*X*  
@Jelgavas pilsēta



*Youtube*  
@JelgavaLV